

Power Supplies

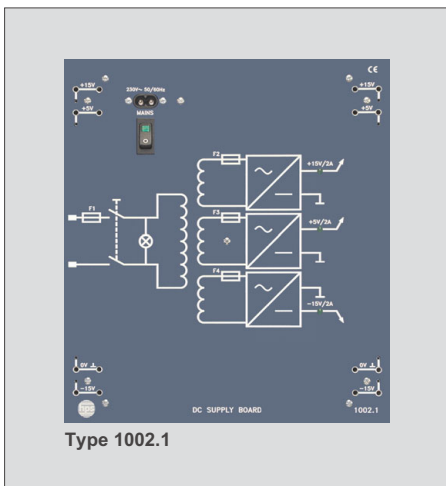


Universal power supply units for direct use on the benchtop or in the hps Demonstration Rack

Type 1002.1
Type 1002.3

DC SUPPLY BOARD

+15 V DC / +5 V DC / -15 V DC



Type 1002.1

Mains connection

- 230 V AC/115 V AC (110 V AC); 120 VA; 50 ... 60 Hz

Output voltages and currents

- DC voltage: +15 V/max. 2 A; residual ripple $U_{pp} \leq 20$ mV
 - DC voltage: +5 V/max. 2 A; residual ripple $U_{pp} \leq 20$ mV
 - DC voltage: -15 V/max. 2 A; residual ripple $U_{pp} \leq 20$ mV
- All voltage outputs are short-circuit-proof (indicated by LEDs), current-limited and electrically isolated from the mains.

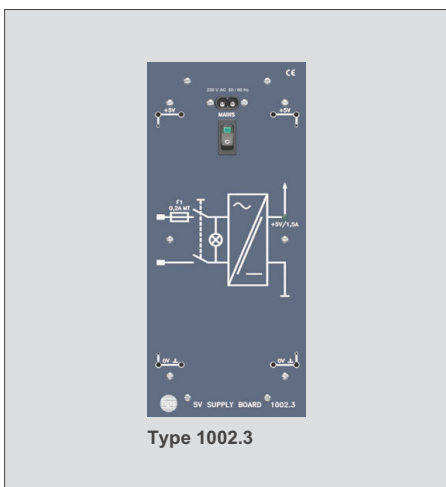
The mains transformer of the DC SUPPLY BOARD is equipped with a thermo-switch on the primary side which cuts off the unit from the mains at temperatures above 125° C. The voltages are fed out through 4 mm jacks.

Dimensions/weight

- 266 x 297 x 95 mm (w x h x d)/3.3 kg

5 V SUPPLY BOARD

+5 V DC



Type 1002.3

Mains connection

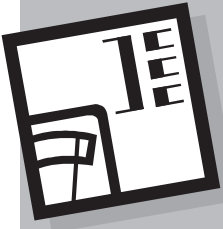
- 230 V AC/115 V AC (110 V AC); 20 VA; 50 ... 60 Hz

Output voltage and current

- DC voltage: +5 V/max. 1.5 A; residual ripple $U_{pp} \leq 20$ mV
- The voltage output is short-circuit-proof (indicated by LED), current-limited and electrically isolated from the mains;
The voltage is fed out through 4 mm jacks.

Dimensions/weight

- 133 x 297 x 95 mm (w x h x d)/1.26 kg

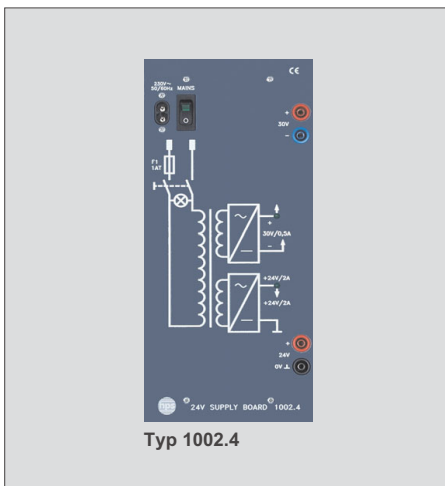


Type 1002.4
Type 2140

Power Supplies

24 V SUPPLY BOARD

+30 V DC / +24 V DC



Mains connection

- 230 V AC / 115 V AC (110 V AC); 90 VA; 50 ... 60 Hz

Output voltages and currents

- DC voltage: +30 V/max. 0.5 A; residual ripple U_{SS} : ≤ 20 mV
- DC voltage: +24 V/max. 2 A; residual ripple U_{SS} : ≤ 20 mV

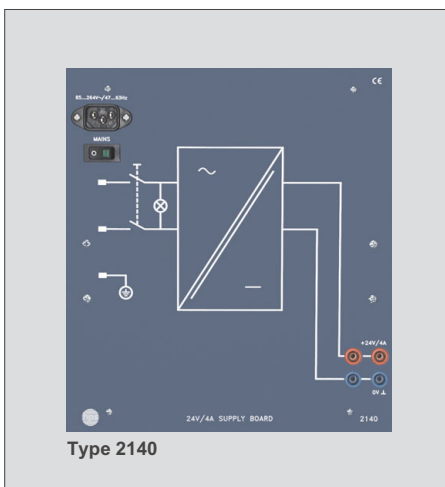
All voltage outputs are short-circuit-proof (indicated by LEDs), current-limited and electrically isolated from the mains.
The voltages are fed out through 4 mm safety jacks.

Dimensions/weight

- 133 x 297 x 95 mm (w x h x d) / weight: 1.85 kg

24 V / 4 A SUPPLY BOARD

+24 V DC



Mains connection

- 85 ... 264 V AC / 47 ... 63 Hz; 100 VA; (switching power supply)

Output voltages and currents

- DC voltage: +24 V / max. 4 A; residual ripple U_{SS} : ≤ 150 mV

All voltage outputs are short-circuit-proof and electrically isolated from the mains.
The voltages are fed out through 4 mm safety jacks.

Dimensions / weight

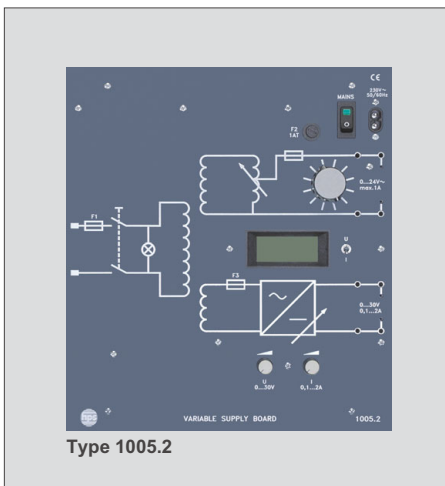
- 266 x 297 x 95 mm (w x h x d) / weight: 1.6 kg



Type 1005.2
Type 1005.3

VARIABLE SUPPLY BOARD

0 ... 30 V DC / 0 ... 24 V AC



Type 1005.2

Mains connection

- 230 V AC/115 V AC (110 V AC); 120 VA; 50 ... 60 Hz

Output voltages and currents (short-circuit-proof)

- DC voltage: 0 ... 30 V/0.1 ... 2 A; residual ripple $U_{pp} \leq 20$ mV
The DC voltage and current can be adjusted continuously with two separate potentiometers and tapped at four 4 mm jacks.
- AC voltage: 0 ... 24 V/max. 1 A. The variable sinewave AC voltage can be set with a regulating transformer and tapped at four 4 mm jacks.

DC current/voltage display

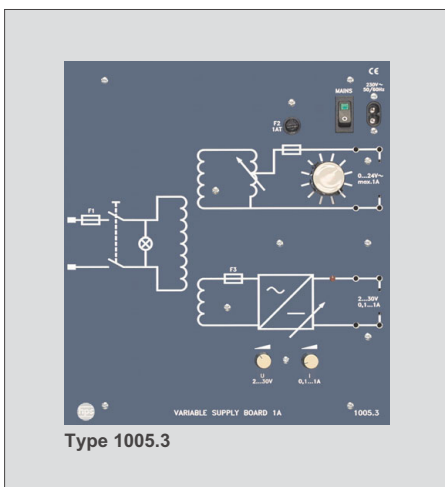
- LC display, switchable between current and voltage

Dimensions/weight

- 266 x 297 x 110 mm (w x h x d)/3.6 kg

VARIABLE SUPPLY BOARD 1 A

2 ... 30 V DC / 0 ... 24 V AC



Type 1005.3

Mains connection

- 230 V AC/115 V AC (110 V AC); 60 VA; 50 ... 60 Hz

Output voltages and currents

- DC voltage: 2 ... 30 V/0.1 ... 1 A; residual ripple $U_{pp} \leq 20$ mV
The short-circuit-proof DC voltage and current can be adjusted continuously with two separate potentiometers and tapped at four 4 mm jacks.
- AC voltage: 0 ... 24 V/max. 1 A;
The variable sinewave AC voltage can be set with a regulating transformer and tapped at four 4 mm jacks.

Dimensions/weight

- 266 x 297 x 110 mm (w x h x d)/2.7 kg

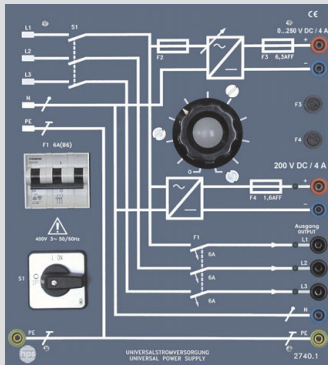


Type 2740.1
Type 8626

Power Supplies

Universal Power Supply

230 V AC / 400 V AC / 200 V DC / 0 ... 250 V DC



Type 2740.1

Mains connection

- 220 V ... 240 V AC/380 V ... 415 V AC; three-phase

Output voltage and current, three-phase

- 220 V... 240 V AC/380 V ... 415 V AC;
with 3-phase pilot lamps and automatic cut-off switch, 3-pole (6 A)

Fixed DC

- 200 V (4 A); for field current supply of DC machines, with pilot lamp

DC, continuously adjustable

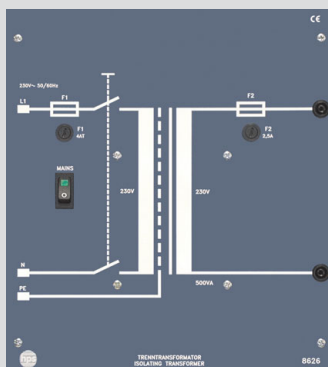
- 0 ... 250 V (4 A); thyristor-controlled; with integrated DC choke

Dimensions/weight

- 266 x 297 x 195 mm (w x h x d)/approx. 4.6 kg

Isolating Transformer

230 V AC



Type 8626

Mains connection

- 230 V AC; 500 VA; 50 ... 60 Hz

Output voltage and current (electrically isolated from the mains)

- 230 V AC; max. 2.5 A

Dimensions

- 266 x 297 x 133 mm (w x h x d)

Weight

- 7.9 kg